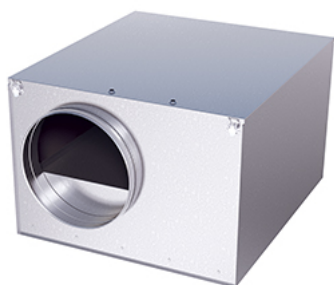
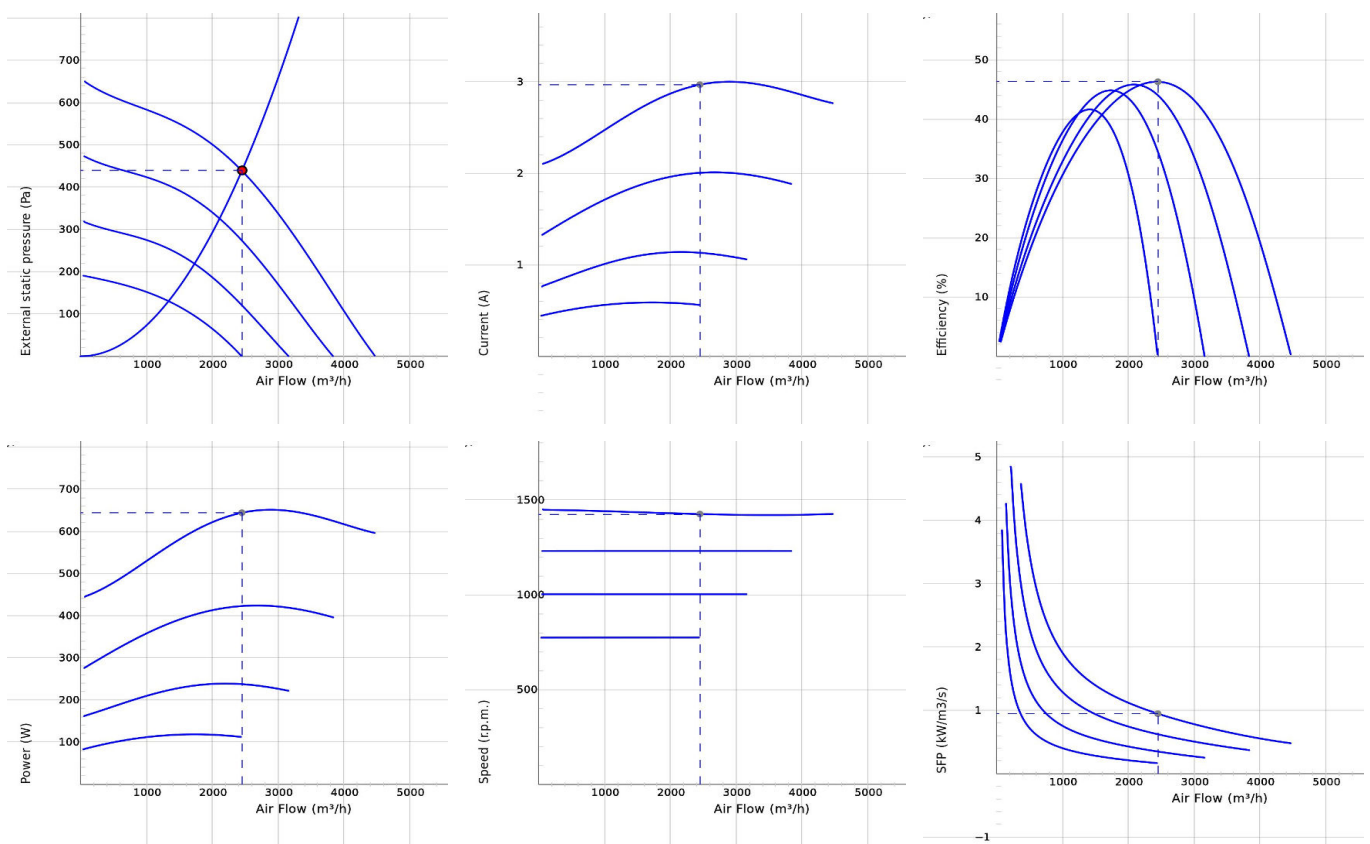


IRB 400 B1 EC



- Insulated duct fan with circular connections.
- Equipped with 50 mm of thermal and acoustic insulation makes it ideal for handling cold air.
- Designed for high pressure and long duct runs.
- The design prioritise functionality, durability and longevity.
- Impeller with backward curved blades.
- The external rotor motor has maintenance-free sealed ball-bearings and is very energy efficient.
- Integrated motor protection.
- Junction box has enclosure class IP 54.
- Speed controlling can be done with the built-in potentiometer, 0-10 V alt. external control.
- The housing is manufactured from galvanized sheet steel.
- Duct connections are equipped with rubber seals.
- The fan is intended to be installed in a duct system.
- A duct connected fan can be installed outside or in damp environments.

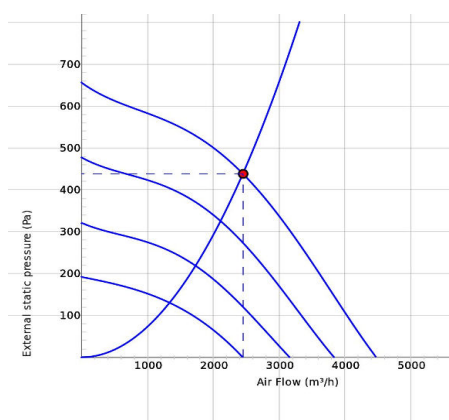
DIAGRAMS



Work Point

Air Flow (m³/h) 2448	External static pressure (Pa) 438	Power (W) 644	Speed (r.p.m.) 1426	Current (A) 2.97	Efficiency (%) 46.3	SFP (kW/m³/s) 0.947	Voltage (V) 10
-------------------------	--------------------------------------	------------------	------------------------	---------------------	------------------------	------------------------	-------------------

SOUND DATA



	Tot	63	125	250	500	1k	2k	4k	8k
Inlet Lw dB(A)	70	60	68	62	57	50	43	39	39
Outlet Lw dB(A)	79	66	77	73	66	64	59	57	51
Surrounding Lw dB(A)	62	47	61	56	44	37	35	34	31
Surrounding Lp dB (A) 20m ² Sabine, hemispherical 3m	55								

Work Point

Air Flow (m ³ /h) 2448	External static pressure (Pa) 438	Power (W) 644	Speed (r.p.m.) 1426	Current (A) 2.97	Efficiency (%) 46.3	SFP (kW/m ³ /s) 0.947	Voltage (V) 10
--------------------------------------	--------------------------------------	------------------	------------------------	---------------------	------------------------	-------------------------------------	-------------------

TECHNICAL DATA

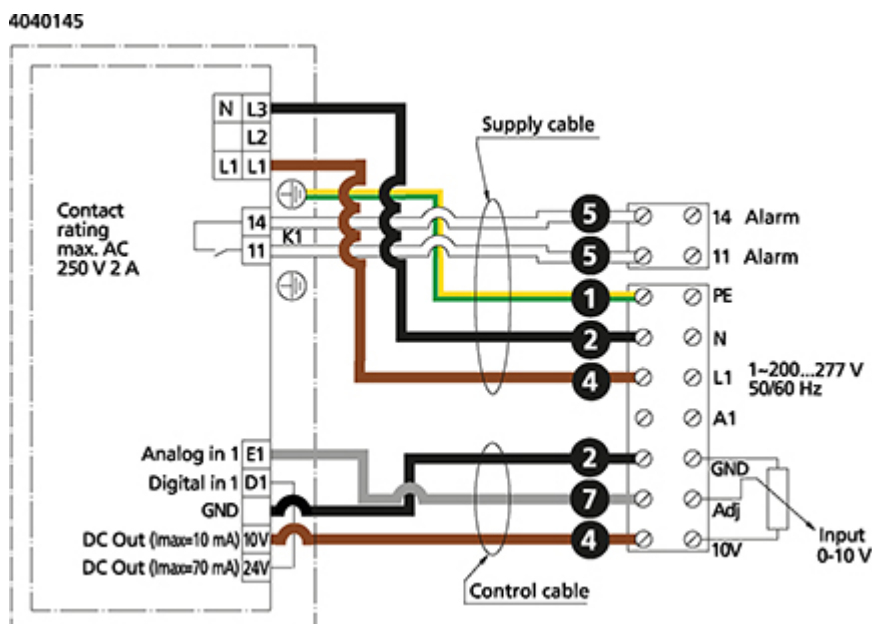
IRB 400 B1 EC 7890054

Parameter	Value	Unit
Voltage	230	V
Phase	1	~
Frequency	50/60	Hz
Power	646	W
Current	2.98	A
Speed	1420	r.p.m.
Max. temperature of transported air	60	°C
Sound pressure level at 3 m	57	dB(A)
Weight	60.7	kg
Enclosure class	54	IP
Insulation class, motor	F	
Duct connection	400	mm
Max. flow	4474.8125294751	m ³ /h
Max. pressure	650	Pa
Voltage range	200-277	V

ECODESIGN

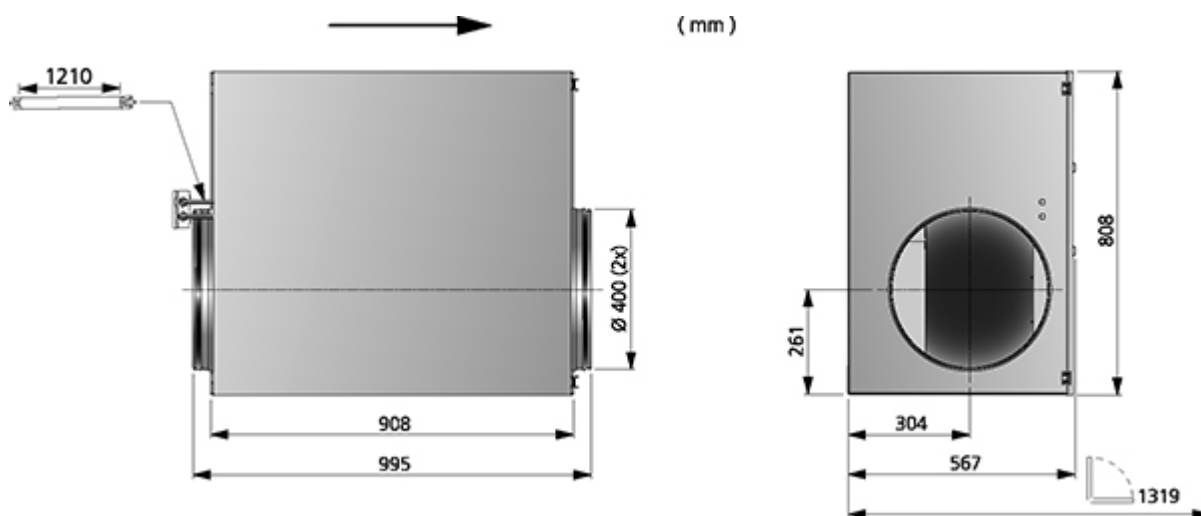
Parameter	Value	Unit
(a) Manufacturer	Östberg	-
(b) Model code	IRB 400 B1 EC	-
(c) Declared type	NRVU / UVU	-
(d) Type of drive	Variable speed drive	-
(e) Type of HRS	N/A	-
(f) Thermal efficiency	N/A	%
(g) Nominal flow rate	0.642	m ³ /s
(h) Effective power input	0.642	kW
(i) SFP int	N/A	W/(m ³ /s)
(j) Face velocity	5.1	m/s
(k) Nominal external pressure	462	Pa
(l) Internal pressure drop	N/A	Pa
(n) Static efficiency	58.6	%
(o) External (and internal) leakage rate	0.35	%
(p) Filter classification	N/A	%
(q) Visual filter warning	N/A	-
(r) Sound power level	64	dB LwA
(s) Disassembly instructions	www.ostberg.com	-

WIRING DIAGRAM



- (M) = Fan Motor
- (M1) = Fan Motor
- (M2) = Fan Motor
- (M3) = Rotor Motor
- 1 = Yellow/Green
- 2 = Black
- 3 = Blue
- 4 = Brown
- 5 = White
- 6 = Orange
- 7 = Grey
- 8 = Red
- 9 = Green
- 10 = Violet
- 11 = Quick switch
- 12 = Yellow

DIMENSIONS



ACCESSORIES

Electrical accessories



Controller IQ-Reg EC



Speed controller MS
EC



Pressure regulator
CALAIR-PR-230V



Pressure regulator
FKP-R

Mechanical accessories



Mounting clamp MK
400



Safety grille BSV 400



Back draught shutter
RSK 400



Louvre shutter VK
400



Filterbox FLK 400



Filterbox FLF 400